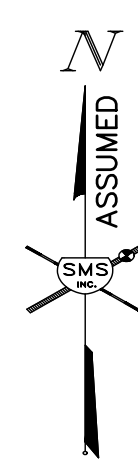


200 0 200 400

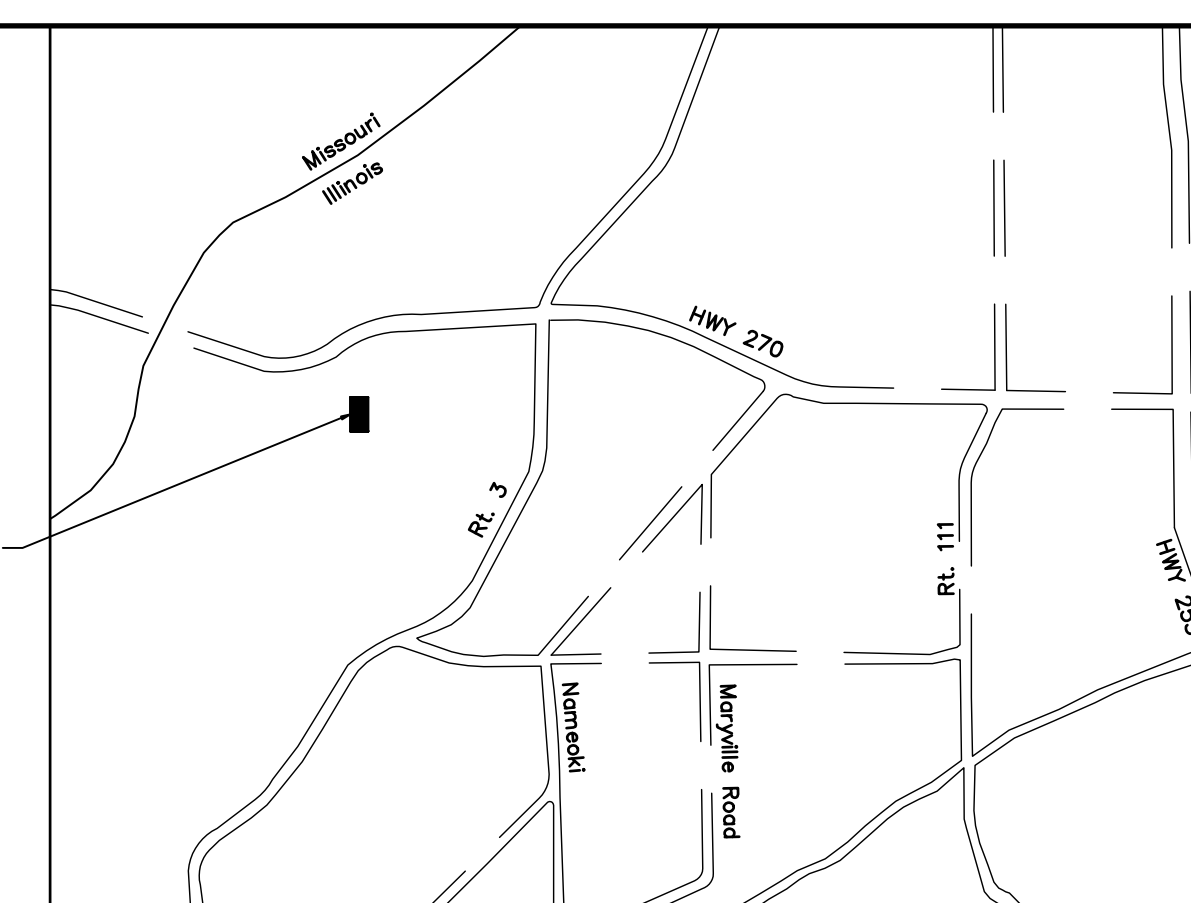
SCALE IN FEET



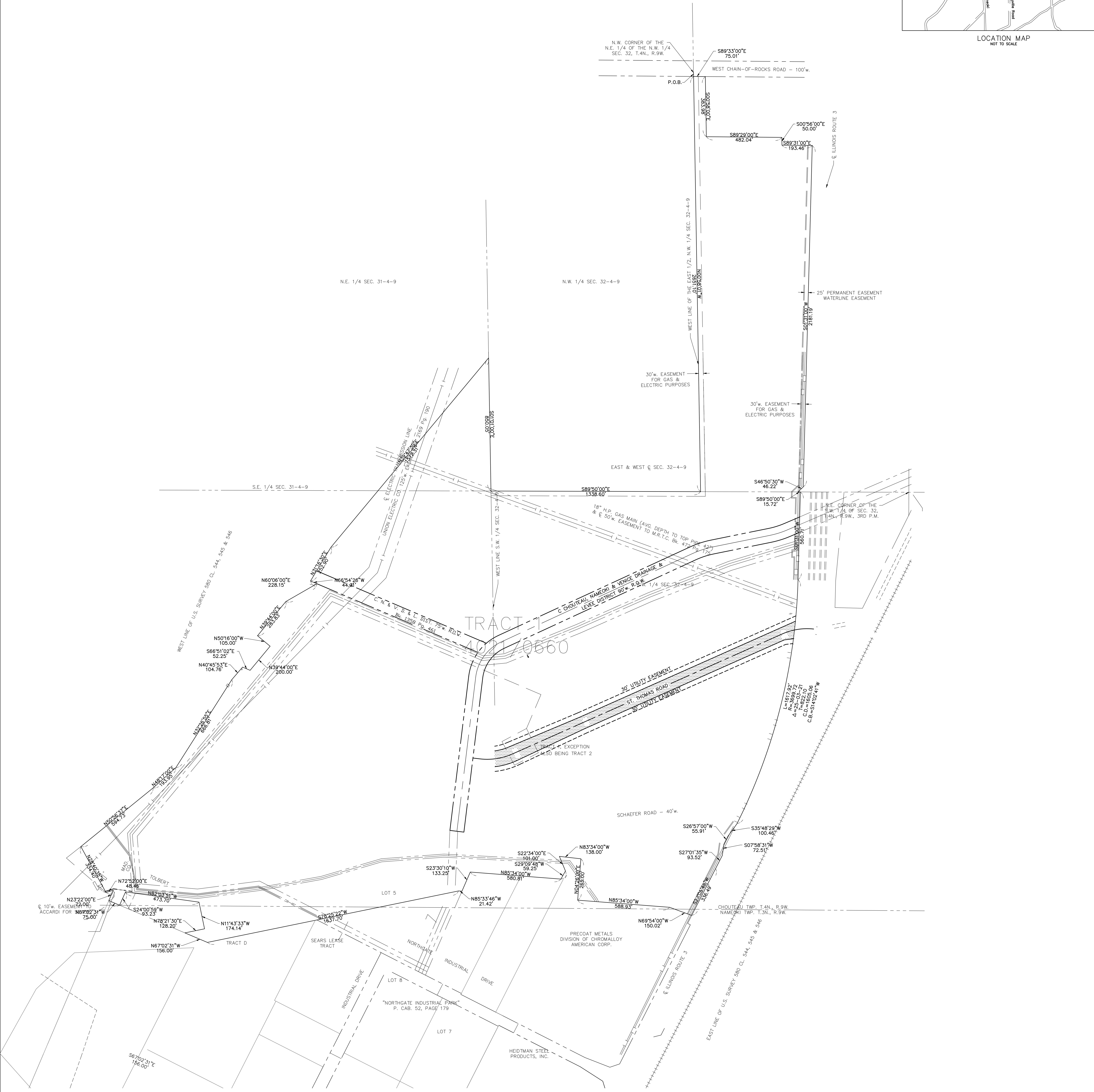
BOUNDARY SURVEY

A TRACT OF LAND BEING PART OF THE NORTHWEST QUARTER AND THE SOUTHWEST QUARTER OF SECTION 32 AND PART OF THE SOUTHEAST QUARTER AND THE SOUTHWEST QUARTER OF, SECTION 31, TOWNSHIP 4 NORTH, RANGE 9 WEST, AND THE NORTH HALF OF SECTION 6, TOWNSHIP 3 NORTH, RANGE 9 WEST OF U.S. SURVEY 580 CL. 544, 545 AND 546 WITHIN THE CORPORATE LIMITS GRANITE CITY, MADISON COUNTY, ILLINOIS
SCALE: 1" = 200' DECEMBER, 2006

PROJECT SITE



LOCATION MAP
NOT TO SCALE



CLIENT:
ATTN: PAM HEEPKE
TRI-VISION PARTNERSHIP
8600 BERTELS ROAD
DORSEY, IL 62021
1-618-656-0658
IRONGATE.DWG ACAP

SMS ENGINEERS	Sheppard, Morgan & Schwaab, Inc. CONSULTING ENGINEERS AND LAND SURVEYORS	DWG. NO. M-181
	210 Market Street, P.O. Box E, Alton, IL 62002 618-462-0700 E-mail: ms@smssurvey.com	TITLE-VISION (477044).dwg
	19 Canal Center Drive, Suite 201, L. 62040 618-747-0700 E-mail: ms@smssurvey.com	REF: BK: PS
	DESIGN FIRM # 184-000992	JOB NO. 477044 DSN: BY: JNL DWN: BY: CAD CHK: BY: JNL
DATE: DECEMBER, 2006		SCALE: 1" = 200'
		SHEET 1 OF 1